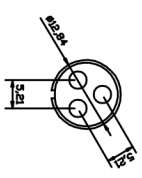
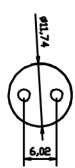
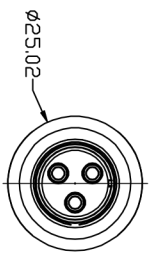
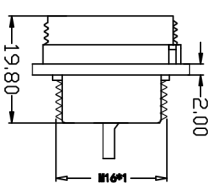
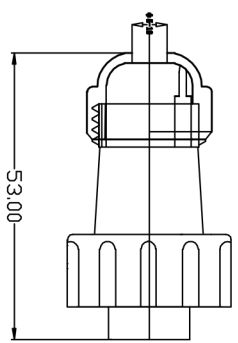
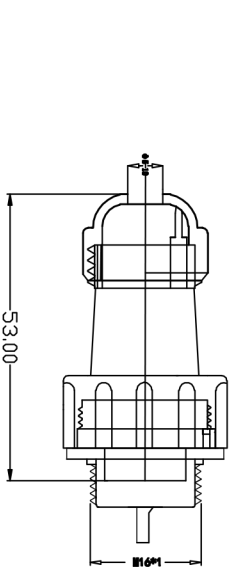


REV. 6	ECON. NO. 11	REV. No 11	REVISER 111	APPD. 11
F21	DRAWING			

适用 $\phi 5-10$ 线缆



- 技术要求:
1. 引脚应排列整齐, 要求无偏位现象。
 2. 外观应无明显缺陷, 如: 熔接痕、缩孔、颜色不一致等。
 3. 可焊性应符合要求
 4. 线规直径: $\leq 2\text{mm}/14\text{mm}$
 5. 接触电阻: $2.5\text{m}\Omega$
 - 6 工作电压: 500V
 7. 接线方式: 焊接
 8. 电流: 16A
 9. 接触直径: $\phi 1.5*2/3$

TYPE NO. 型号: SP17后螺母 2-3芯		TITLE: ASSEMBLY 装配图	
>120	± 0.50	DWG. NO.: KNT-TL-20	PAGE: 1/1
>30~120	± 0.30	APPD. 设计:	REV.: F20
>8~30	± 0.20	CHKD. 审核:	
0~6	± 0.10	DR. 设计:	
ANGLE $\pm 1'$		SCALE: FULL	
		UNIT: mm [Decimal]	